

## 2021 ST. PAUL ISLAND TOUR

### COVID-19 PLAN



**Remote. Wild. Unbelievable.**

---

## 1. 2021 Tour COVID-19 Island Protection and Safety Plan

### A. Introduction

Due to the ongoing COVID-19 pandemic, strict guidelines in accordance with health experts and the CDC must be followed in order to keep residents of Saint Paul Island safe, as well as the guests traveling to and from the island. In addition, there are special concerns that apply and increased care must also be taken as the healthcare system on the island is extremely limited in capacity and the resident population is uniquely prone to infectious viruses (predominantly colder temperatures, confined areas, etc.). With this said, we believe that a Tour program can be conducted safely in 2021. Safety has always been the utmost priority for St. Paul Island Tour. In 2020, it was an easy decision to cancel the Tour season, a first in the 60+ years of operation of the Tour. A testament to our commitment to the safety of all who travel on our St. Paul Tour is that to this day we remain accident and injury free.

It has now been over one year since COVID-19 reached the United States. COVID-19 protocols and testing have become widespread and Saint Paul residents are seeking an eighty percent vaccination rate against the virus in the coming months. We have adapted these safety protocols for St. Paul Island Tour in accordance with guidance from the CDC, the State of Alaska, the Municipality of Anchorage, and the City of Saint Paul, and Saint Paul Island Unified Command, all of which are included herein. There have now been many successful examples of safe tourism practices across the country, and we are adopting the industry-best standard to ensure a successful, safe, and enjoyable 2021 tour season. Our plan is divided into three primary phases or courses of action as outlined in the following pages with appendices to reference.

All sections and subsections in this plan are subject to change at the request of the City of Saint Paul.

---

## 2. COVID-19 Protocol: Pre-entry into the State of Alaska [Anchorage]

- A. St. Paul Island Tour website communications will bulletin and advise our protocols and requirements to guests ahead of bookings.
- B. All guests and Tour guides must agree to our Terms & Conditions (Appendix 2a) before bookings are confirmed.
- C. All guests and Tour guides must also agree to our COVID-19 St. Paul Tour Protocols (2021 Tour COVID-19 Safety and Island Protection Plan; this document herein).
- D. All guests and Tour guides will be required to follow all active State of Alaska (Appendix 2b) and Municipality of Anchorage (Appendix 2c) health mandates.
  - 1. All travelers should submit a Travel Declaration Form and Self-Isolation Plan in the Alaska Travel Portal.
  - 2. A negative result from a molecular based COVID-19 test taken within 72 hours of travel to Alaska is strongly recommended.
  - 3. Fully-vaccinated travelers should still receive a molecular COVID-19 test.
  - 4. See Appendix 2b for a detailed explanation of all options and recommendations.

### 3. COVID-19 Protocol: Pre-entry to Saint Paul Island, Alaska

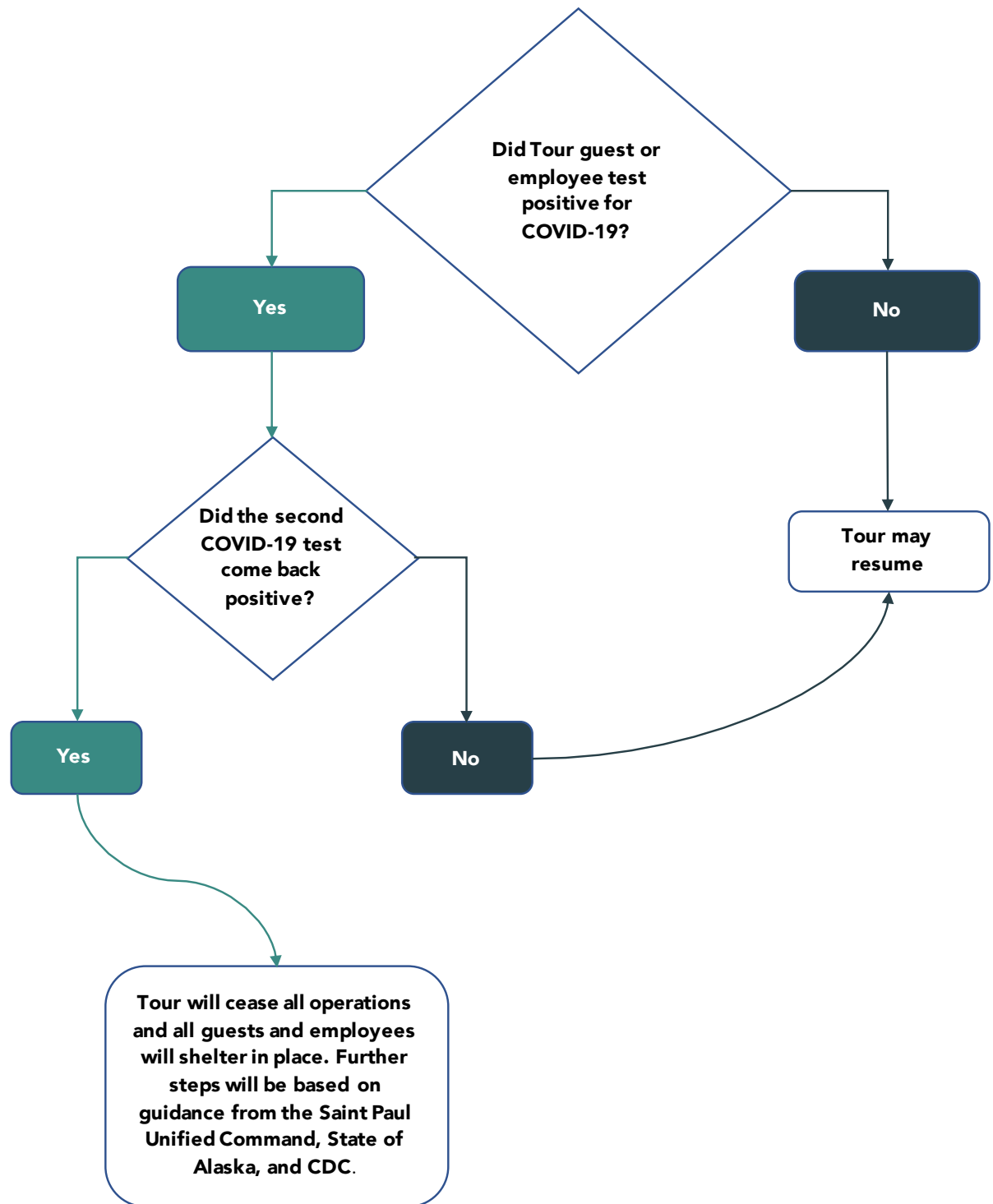
- A. All guests and Tour guides will be required to follow City of Saint Paul, Alaska Emergency Ordinances pertaining to COVID-19 travel mandates for entry to Saint Paul Island (Appendix 4a).
- B. Prior to receiving travel documents (Ravn Alaska flight & St. Paul Island Tour reservation confirmations), all guests will be checked for a valid COVID-19 vaccination certificate for entry to Saint Paul Island.
- C. St. Paul Island Tour shall submit a Group COVID-19 Travel Form for each group of individuals traveling to Saint Paul Island.
- D. In accordance with City of Saint Paul Emergency Ordinances, a copy of each individual's vaccination card is required to be submitted to the City of Saint Paul prior to travel.
  - 1. Tour employees (i.e. guides) will also be required to submit COVID-19 vaccination cards.
  - 2. CDC, State of Alaska, Municipality of Anchorage, and City of Saint Paul entry requirements are subject to change as knowledge on the pandemic evolves.
- E. In accordance with the Alaska Department of Health and Social Services and City of Saint Paul Emergency Ordinances, a negative molecular based COVID-19 test result must also be received, taken within 72 hours of travel to Saint Paul Island.
- F. A COVID-19 Screening Form must be completed by each guest in advance of the flight (Appendix 3a).
- G. A temperature check will be conducted immediately prior to boarding the flight to Saint Paul Island (below 100.3°F will be considered healthy).
- H. Ravn Alaska (air carrier) will perform a secondary verification that all passengers are approved for travel before boarding.
  - 1. St. Paul Island Tour will submit a list of approved travelers to Ravn Alaska for each flight no less than 48 hours prior.
- I. Ravn Alaska protocols will be required to be followed by all guests (See Appendix 3b).
- J. In the event of a canceled flight resulting in an "expired" COVID-19 test result (i.e., a test now taken greater than 72 hours prior), each guest shall submit to a rapid COVID-19 test (molecular based). A second negative test result will be required.

#### **4. COVID-19 Protocol: While Present on Saint Paul Island, Alaska**

- A. All guests and Tour guides will be required to follow City of Saint Paul, Alaska Emergency Ordinances pertaining to COVID-19 while on Saint Paul Island (Appendix 4a).
- B. Once guests arrive, they will receive their room keys in a contactless manner and head straight to their rooms to get settled.
- C. Guest orientation will occur in the King Eider Hotel B-wing lounge, away from public gathering spaces, such as the terminal.
- D. All guests will be a part of a functional 'bubble' at POSS Camp (three miles from the town), where they may not come into contact with any residents of Saint Paul Island, including the hotel manager (See Appendix 4b for location of POSS Camp). Tour guides will reside at A-Dorm with identical social restrictions and the 'bubble' will be maintained across both locations.
  - 1. POSS Camp will be secured with restricted access for residents of Saint Paul Island.
  - 2. During flights, only ticketed passengers will be allowed in the Ravn Alaska terminal as is currently allowed. All other residents must remain outside/in their vehicles.
  - 3. All Tour passengers will wait in B-wing before being called for boarding the aircraft.
- E. All guests and employees will observe standard Tour COVID-19 Protocols.
  - 1. Masks are required to be worn while in all indoor spaces (except for personal rooms), inside Tour vehicles, and when distances of six feet between individuals cannot be maintained.
  - 2. Social distancing guidelines will be enforced at all times, except when guests are inside personal rooms.
  - 3. Guests will be required to report symptoms twice daily, or lack thereof, accompanied by twice daily temperature checks performed by a Tour employee (below 100.3°F will be considered healthy). All will be logged on the Health Monitoring Checklist (See Appendix 4c) and filed for future reference if needed.
  - 4. Touch point sanitizing stations will be provided by Tour in addition to sanitizing wipes for use on optics.
- F. Meals will be provided via a self-sufficient commissary operation at POSS Camp with Coast Hotel Restaurant support and personnel.

1. All Coast Hotel COVID-19-related food protocols will be observed and followed.
- G. Tour vehicles will be sanitized three times daily (after each field session) with an electrostatic disinfectant sprayer.
- H. The King Eider Hotel will undergo enhanced sanitization in accordance with *Coast Clean™* protocols (Appendix 4d; document attached separately).
  1. Housekeepers will be vaccinated for COVID-19 in accordance with TDX Employee Mandates and will follow Coast Hotel protocols (temperature checks, PPE, social distancing).
  2. Housekeeping services will be limited and only carried out during hours when guests are out of the hotel.
- I. Guests and Tour guides will not be permitted to enter public places in town or residents' homes (i.e., the Aleut Community Store, Post Office, City Hall). See City of Saint Paul Emergency Ordinances for a detailed list.
  1. If a guest or Tour guide requires goods from the store, they will be acquired on behalf of the guest by a Saint Paul Island TDX employee and delivered in a contactless manner.
  2. Tour vehicles will be filled with gasoline by the gas attendant and the Tour guides will remain in the vehicle (contactless), using a cell phone if necessary.
- J. In the event any guest or employee presents COVID-19-related symptoms, they will be isolated to City-provided quarantine lodging reserved for Tour quarantine and COVID-19 tests will be promptly administered at the Saint Paul Health Clinic.
  1. The Tour Manager will provide a formal notification at once to the Saint Paul Unified Command and Saint Paul Health Center (Clinic Administrator and Medical Director).
  2. A tracking form and action plan will also be submitted.
  3. While the test result is pending, Tour will go into limited operation and all Tour guests and Tour guides will be isolated at POSS Camp until further notice.
  4. Current CDC guidance is that persons who have been in close contact with someone who has COVID-19 are not required to quarantine if they have been fully vaccinated within the last three months and show no symptoms.
  5. See Figure 1 (below); COVID-19 Test Result Flow Chart.

Figure 1: COVID-19 Test Result Flow Chart



## 5. Expedition-class Vessel Port of Calls

6. After careful evaluation, the determination has been made that all leisure cruise vessel port of calls will not be permitted (i.e., shore visits) at Saint Paul Island in 2021 due to the difficult-to-mitigate safety risk that is posed to the community.
7. This will be reviewed and further evaluated again in December 2021 in regards to the 2022 Tour season.

## 6. Sample Three Day/Two Night Tour Itinerary

### A. Day One

1. Passenger checks in at Ravn Alaska counter – Ravn will perform a final verification that passenger is on approved travel roster provided by St. Paul Island Tour.
2. Passenger will fill out a COVID-19 Screening Form – which will be filed by Ravn.
3. Passenger will submit to a temperature check prior to boarding.
4. After arriving at Saint Paul Island, passenger will pick up key envelope and head straight to B-Wing room.
5. Guest orientation will occur in B-Wing lounge.
6. A short afternoon field session with guides.
7. Dinner at Hotel Commissary.
8. Evening Field Session with guides.
9. Guest will submit to a PM symptom and temperature check, to be recorded on form.
10. Bedtime.

### B. Day Two

1. Guest wakes up for the day.
2. AM symptom and temperature check recorded on form.
3. Breakfast at Hotel Commissary.
4. Morning field session with guides.
5. Lunch at Hotel Commissary.
6. Afternoon field session with guides.



7. Dinner at Hotel Commissary.
8. Evening field session with guides.
9. PM symptom and temperature check recorded on form.
10. Bedtime.

**C. Day Three**

1. Guest wakes up for the day.
2. AM Symptom and Temperature Check recorded on form.
3. Breakfast at Hotel Commissary.
4. Morning field session with guides.
5. Lunch at Hotel Commissary.
6. Guest prepares for flight departure.
7. Final PM symptom and temperature check recorded on form.
8. Guest will be sequestered in B-wing while awaiting call for boarding.
9. Guest departs on Ravn Alaska flight.

**7. Additional Considerations:**

- A. All protocols and mandates herein are subject to update and change to conform to current mandates and guidance issued by the CDC, State of Alaska, Municipality of Anchorage, and City of Saint Paul.

## 8. Appendix

2a. St. Paul Island Tour 2021 Terms & Conditions . . . . .	10
2b. State of Alaska COVID-19 Mandates . . . . .	21
2c. Municipality of Anchorage COVID-19 Mandates . . . . .	26
3a. COVID-19 Screening Form . . . . .	29
3b. Ravn Alaska COVID-19 Protocols . . . . .	30
4a. City of Saint Paul Emergency Ordinance 21-91 . . . . .	31
4b. St. Paul Island Map and Location of POSS Camp . . . . .	41
4c. Health Monitoring Checklist . . . . .	42
4d. Coast Clean™ Protocol . . . . .	43